

Terminology

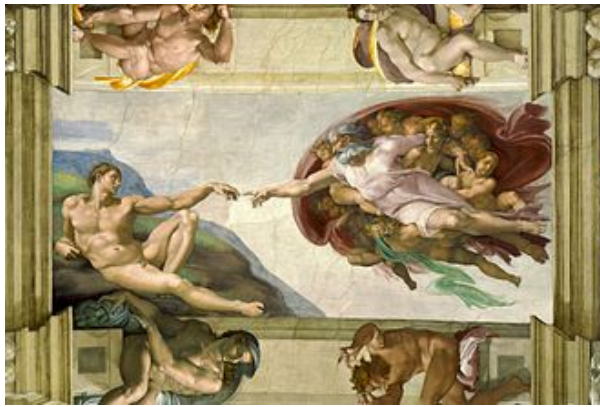
Canon	A law or accepted code that prescribes a set of standards
Earthworks	Artworks created by altering a large area of land using natural and organic materials. Earthworks are usually large-scale projects that take formal advantage of the local topography.
Enigmatic	Puzzling or cryptic in appearance or meaning
Fresco	A mural painting technique in which pigments mixed in water are used to form the desired color. These pigments are then applied to wet lime plaster, thereby binding with and becoming an integral part of a wall.
Golden mean	A mathematical ratio in which width is to length as length is to length plus width. This ratio has been employed in design since the time of the ancient Greeks. It can also be found in natural forms.
Golden rectangle	The ancient Greek ideal of a perfectly proportioned rectangle using a mathematical ratio called the Golden mean.
Hieratic scaling	A composition in which the size of figures is determined by their thematic importance
Proportion	Size measured against other elements or against a mental norm or standard
Subjective	Reflecting a personal bias
Surrealism	An artistic style that stresses fantastic and subconscious approaches to art making and often results in images that cannot be rationally explained



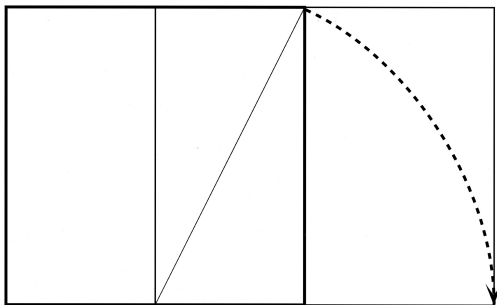
an example of **hieratic scaling**



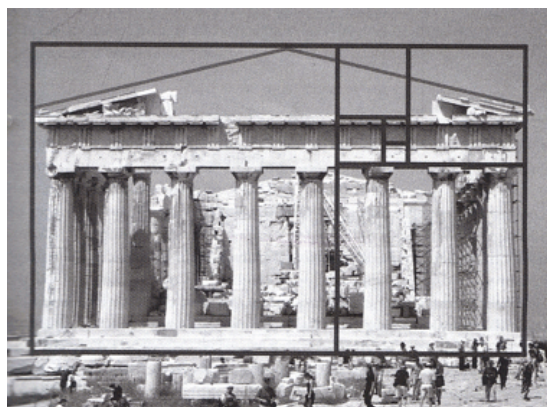
an example of an **earthwork (or land art)**



Michelangelo's Sistine Chapel is an example of a **fresco**



the **golden rectangle**



the **golden rectangle** in the Pantheon from ancient Greece